

SHARP

Be Original.

MX-B450
MX-B350

Digital Multifunctional System



**Solid 3-in-1 Performance
for Any Workplace**



A Versatile and Desk-Friendly Document Solution

The sleek, space-saving MX-B450/B350 is a practical B&W document solution for any place of work. With a small footprint* of 428 × 507 mm, this smart MFP will easily find a niche in your SOHO or larger office—simply place it on a desk or under a counter. Solid 3-in-1 functionality gives you documents of consistently high quality. By streamlining your document workflow, the MX-B450/B350 helps you hit your business targets every day.

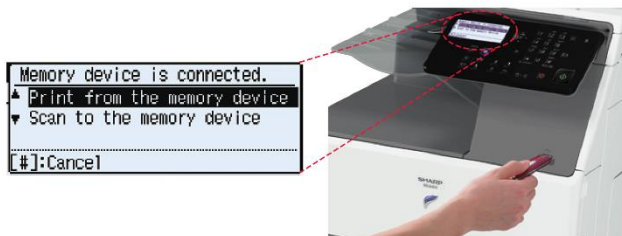
* "Footprint" refers to the part directly adjacent to the floor or desk space. The numerical value is for the MFP's base unit only.



USABILITY

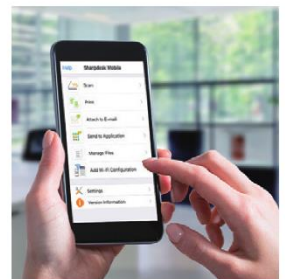
Direct Printing/Scanning with USB Drives

Insert a USB drive into the MFP and a command screen automatically pops up on the LCD. Right away you can print files from the USB drive or scan documents directly to the USB drive.



Sharpdesk Mobile*

Sharpdesk Mobile is a mobile print/scan application. With Sharpdesk Mobile, users can import documents scanned on the MFP to their mobile devices for previewing and saving. And files on a mobile device can be printed out on the MFP, sent as e-mail attachments, or used in other applications.

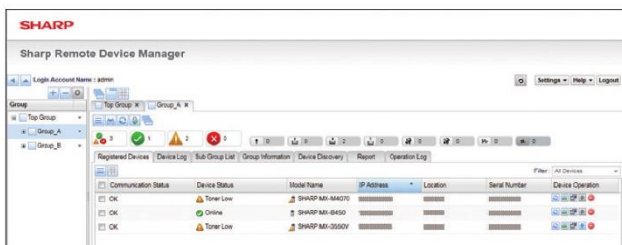


* Availability varies by country/region. For details, see the Sharpdesk Mobile support website: http://sharp-world.com/products/copier/docu_solutions/mobile/sharpdesk_mobile/

Device Management

Sharp Remote Device Manager* (SRDM) gives administrators centralised control of their networked MFPs and printers. This software covers system setup, security settings, troubleshooting, and more.

* Contact a Sharp customer representative for availability and other details.



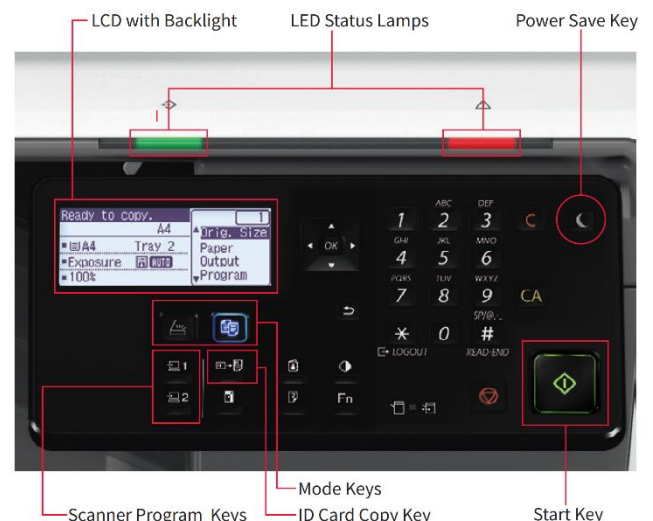
Sharp Remote Device Manager

Reliable Security

- **User authentication** prevents unauthorised use of the MFP. Up to 30 users can register a unique access number
- Retained data can be **erased** when it's time to replace the MFP, to prevent confidential information from leaking

Easy-to-Use Control Panel

The MFP has a user-friendly control panel. Next to it are two LED lamps: one red, one green. These light up to notify you—even from a distance—of the status of the machine.

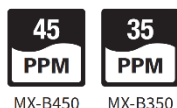


COPY/PRINT

Efficient Output

This MFP delivers a fast output of 45/35 ppm*. The first copy comes out in 8.5/9.0 seconds, saving you valuable time when performing multiple short-run jobs. The MFP's warm-up time of 29 seconds brings added efficiency and reduces overall energy consumption.

* A4 (8 1/2" x 11"), short-edge feeding



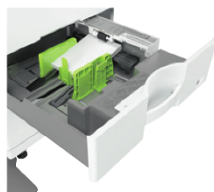
Ample Paper Capacity

A 500-sheet tray and 50-sheet multi bypass tray come standard. An optional 600-sheet paper feed unit is available for a total paper capacity of 1,150 sheets.



Accommodates Various Paper Sizes

A wide variety of paper sizes, including A6, are accommodated by the standard tray, as well as by the multi bypass tray. The optional paper feed unit and multi bypass tray handle legal-size paper and paper up to 220 g/m² thick.



SCAN

Full-Colour Network Scanning

This MFP works as a full-colour network scanner and supports TIFF, PDF, and JPEG file formats. Converting any type of paper-based document into an editable digital file is as easy as making a copy.



Sharpdesk

With Sharpdesk integrated document management software, scanned files can be organised, edited, converted, and combined with ease. What's more, Full Text Search makes it easy to retrieve your documents.

Scanner Program Keys

Scanner Program Keys on the control panel enable users to register frequently used scan settings and destinations for easy, one-touch recall.

ID Card Copy

The MFP has a dedicated key for easy copying of both sides of a card (ID cards, credit cards, etc.) onto a single page.



PCL 6 and PostScript® 3™

For enhanced font compatibility and improved graphics handling, the MFP supports both PCL 6 and PostScript 3.

Network Interface

Fast, powerful networking capability is provided via the 1000Base-T gigabit Ethernet standard.

Automatic Document Feeder

A standard-equipped 50-sheet RSPF (reversing single pass feeder) scans at 40 opm* (one-sided) and enables efficient duplex copying of paper sizes ranging from A4 to A6.

* Originals per minute; when feeding A4 (8 1/2" x 11") sheets

Business Card Scanning

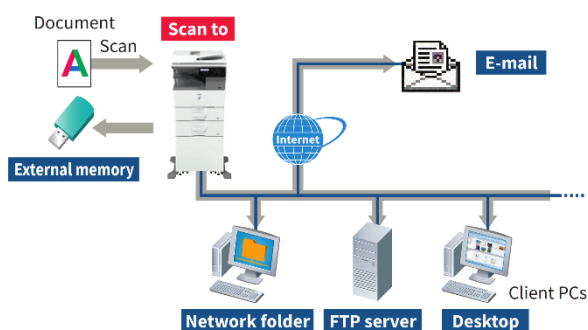
The MFP easily scans batches of up to 25 business cards* with its RSPF and can be used with commercially available business card scan software to create business card databases.



* One-sided scanning

Multiple Scan Destinations

You can choose different ways to distribute your scanned documents: for example, send as an e-mail attachment or scan directly to an FTP server for storage.



SPECIFICATIONS (tentative)

General

Type	Desktop
Engine speed	A4 (8 1/2" x 11")*1: Max. 45/35 ppm
Control panel display	5-line LCD
Paper size	Max. A4 (8 1/2" x 14"), min. A6 (5 1/2" x 8 1/2")
Paper capacity (80 g/m ²)	Standard: 550 sheets (500-sheet tray and 50-sheet multi bypass tray) Maximum: 1,150 sheets (550 sheets & optional 600-sheet tray)
Paper weight	Tray 1: 60 g/m ² to 105 g/m ² (16 lbs bond to 28 lbs bond) Tray 2 (MX-CS14): 55 g/m ² to 220 g/m ² (13 lbs bond to 80 lbs cover) Multi bypass tray: 55 g/m ² to 220 g/m ² (13 lbs bond to 80 lbs cover)
Warm-up time*2	29 sec.
Memory	1 GB (copy/print shared)
Power requirements	Rated local AC voltage ±10%, 50/60 Hz
Power consumption	Max. 1.84 kW (220 V to 240 V)
Dimensions (W x D x H)*3	492 x 517 x 560 mm (19 3/8" x 20 23/64" x 22 1/16")
Weight (approx.)	29 kg (64.0 lbs)

Copier

Original paper size	Max. A4 (8 1/2" x 14")
First copy time*4	8.5/9.0 sec.
Continuous copy	Max. 999 copies
Resolution	Scan: 600 x 600 dpi, 600 x 300 dpi Print: 600 x 600 dpi
Gradation	Equivalent to 256 levels
Zoom range	25% to 400% (25% to 200% using RSPF) in 1% increments
Preset copy ratios	Metric: 8 ratios (4R/4E), inch: 5 ratios (3R/2E)

Network Colour Scanner

Scan method	Push scan (via control panel) Pull scan (TWAIN-compliant application)
Scan speed*5	Colour: Max. 13 originals/min. B/W: Max. 40 originals/min.
Resolution	Push scan: 100, 150, 200, 300, 400, 600 dpi Pull scan: 75, 100, 150, 200, 300, 400, 600 dpi 50 dpi to 9,600 dpi via user setting*6
File formats	TIFF, PDF, JPEG*7
Scanner utility	Sharpdesk
Scan destinations	Scan to e-mail/desktop/FTP server/network folder (SMB)/USB drive

Network Printer

Resolution	600 x 600 dpi
Interface	USB 2.0 (host, high-speed), 10Base-T/100Base-TX/1000Base-T
Supported OS	Windows Server® 2008, Windows Server® 2008 R2, Windows Server® 2012, Windows Server® 2012 R2, Windows Server® 2016, Windows® 7, Windows® 8.1, Windows® 10, Mac OS 10.6, 10.7, 10.8, 10.9, 10.10, 10.11, 10.12, 10.13
Network protocols	TCP/IP
Printing protocols	LPR, Raw TCP (port 9100), FTP for downloading print files, IPP, WSD
PDL	PCL 6 emulation, PostScript® 3™ emulation
Available fonts	80 fonts for PCL, 136 fonts for PostScript 3 emulation

*1: Short-edge feeding.

*2: In a standard measurement environment. May vary depending on operating conditions and environment.

*3: Including adjusters and protuberances.

*4: Short-edge feeding of A4 (8 1/2" x 11") sheets from 1st paper tray, using document glass, MFP in fully ready condition. May vary depending on operating conditions and environment.

*5: Scan speed will vary depending on the type of document, the scan settings, operating conditions, and environment. Based on Sharp's A4 standard chart, using document feeder, short-edge feeding, one-sided scanning, and factory default settings.

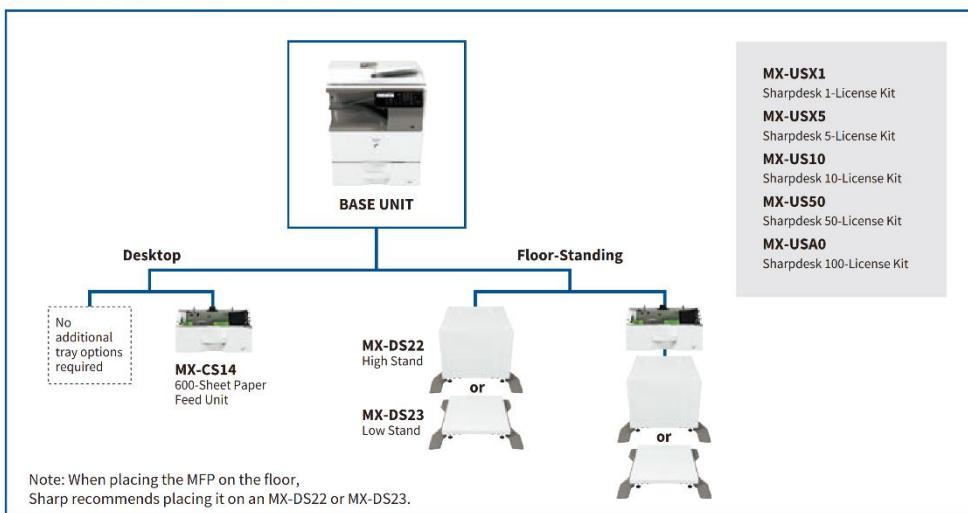
*6: Resolution will vary depending on the size of the scanned area.

*7: Colour/greyscale only.

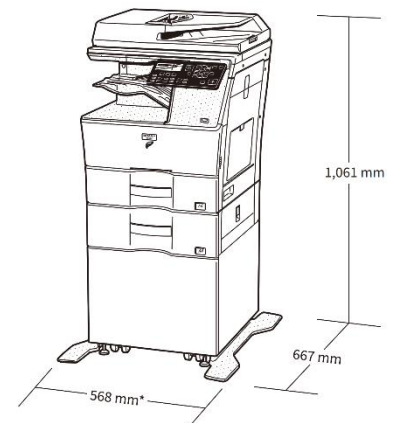
• Design and specifications are subject to change without prior notice.

• PCL is a registered trademark of Hewlett-Packard Company. PostScript 3 is either a registered trademark or trademark of Adobe Systems Incorporated in the US and/or other countries. Windows Server and Windows are either registered trademarks or trademarks of Microsoft Corporation in the US and/or other countries. Mac is a trademark of Apple Inc., registered in the US and other countries. All other brand names and product names may be trademarks or registered trademarks of their respective owners.

SYSTEM CONFIGURATION



Certain optional equipment may not be available in some areas.



* 702 mm when multi bypass tray is extended.

MX-B450 shown with optional equipment.

SHARP



PT SARANA SOLUSINDO PRIMA

Contact Us

0812 1188 8051

sales@saranasolusindoprima.com

saranasolusindoprima.id

saranasolusindoprima.id

saranasolusindoprima.com